

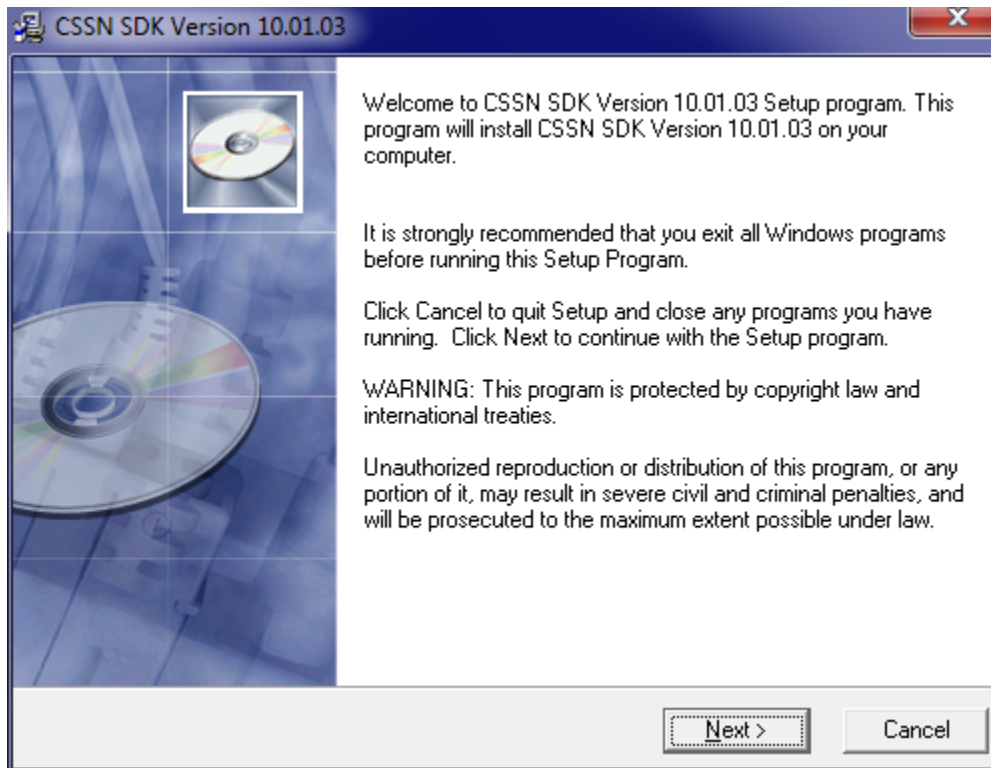
CSSN SDK and Driver Installation Guide

The following are the instructions to install CSSN SDK and device drivers.

1. Please make sure it's a fresh install and uninstall anything (SDK, IdScan etc.) which you have installed before to make the scanning device work.
2. Before launching the installation make sure the scanning device is not connected to the computer.
3. Please download the latest SDK version. Register on this page to get the SDK - <http://www.cssn-developers.com/members/registerapprove.php>. Following your registration, you will receive instructions to download the SDK. If you are already a member, please click on the link "Already a member" and login with your credentials to download the SDK.

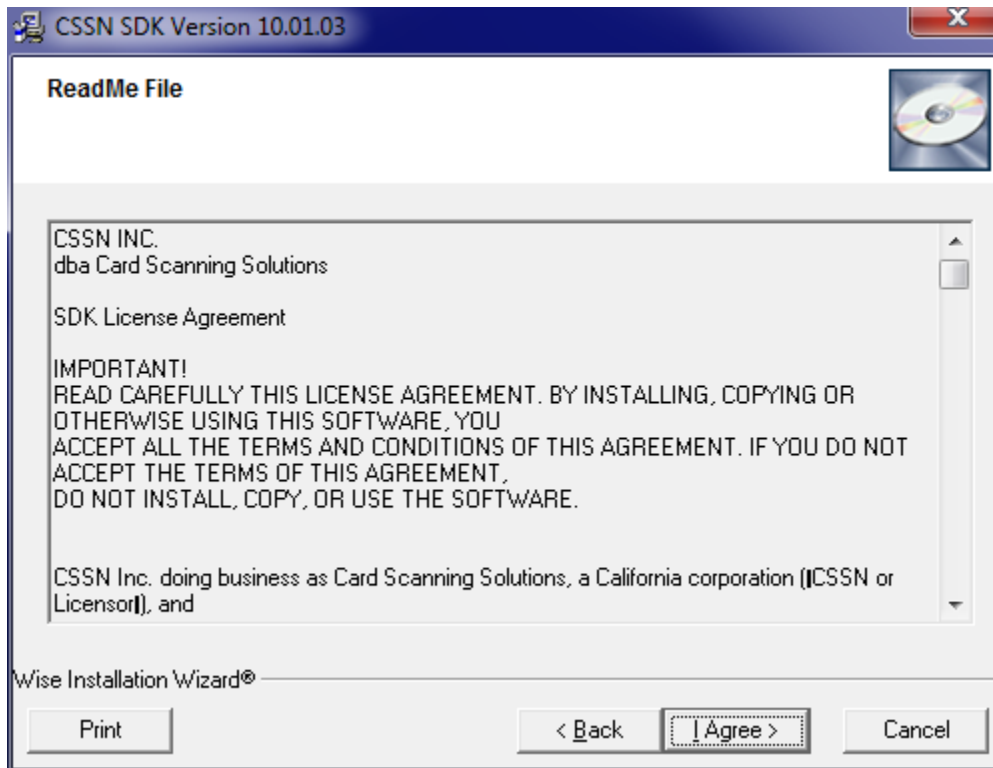
Step by step installation guide –

Screen 1:



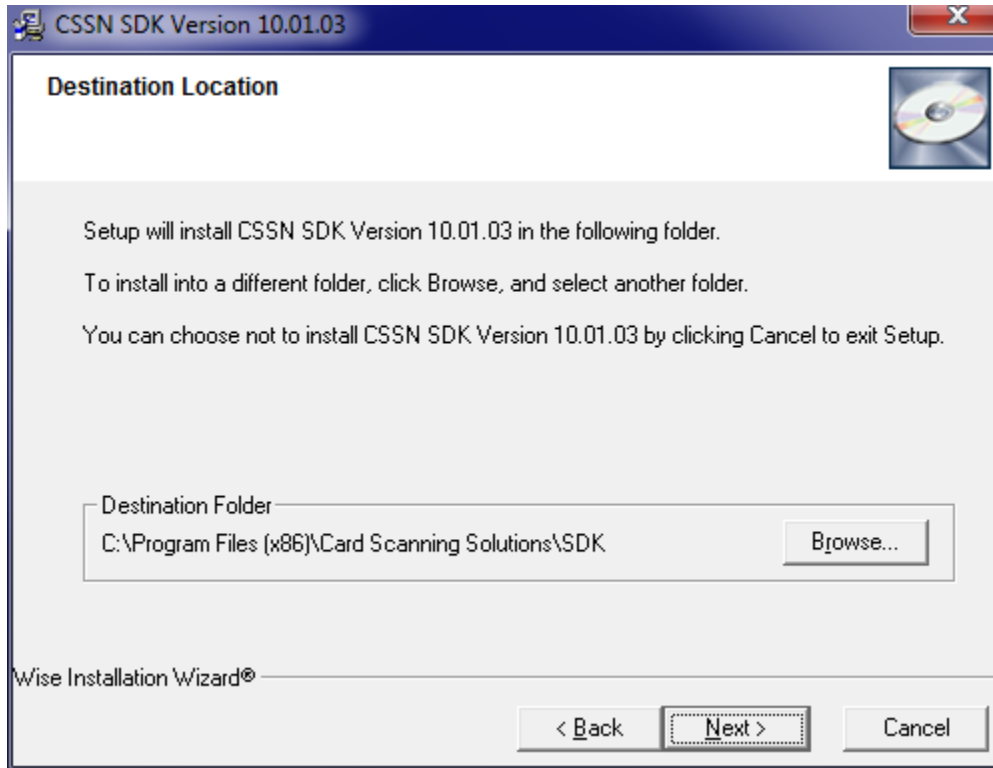
Press - 'Next'.

Screen 2:



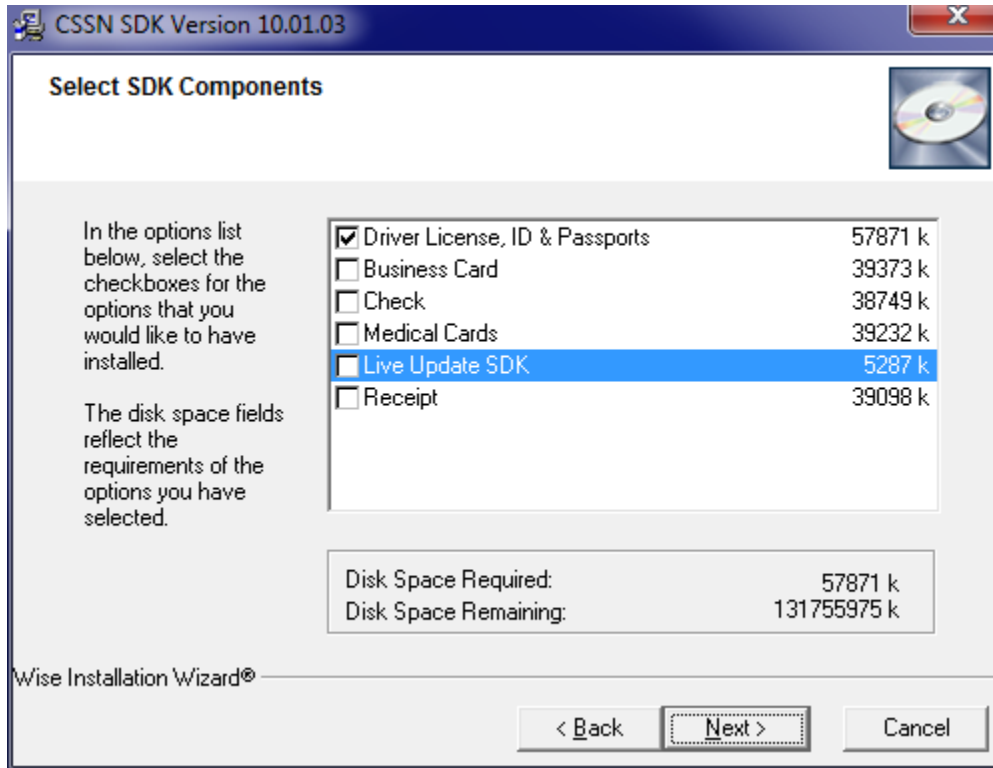
Press – 'I Agree'

Screen 3:



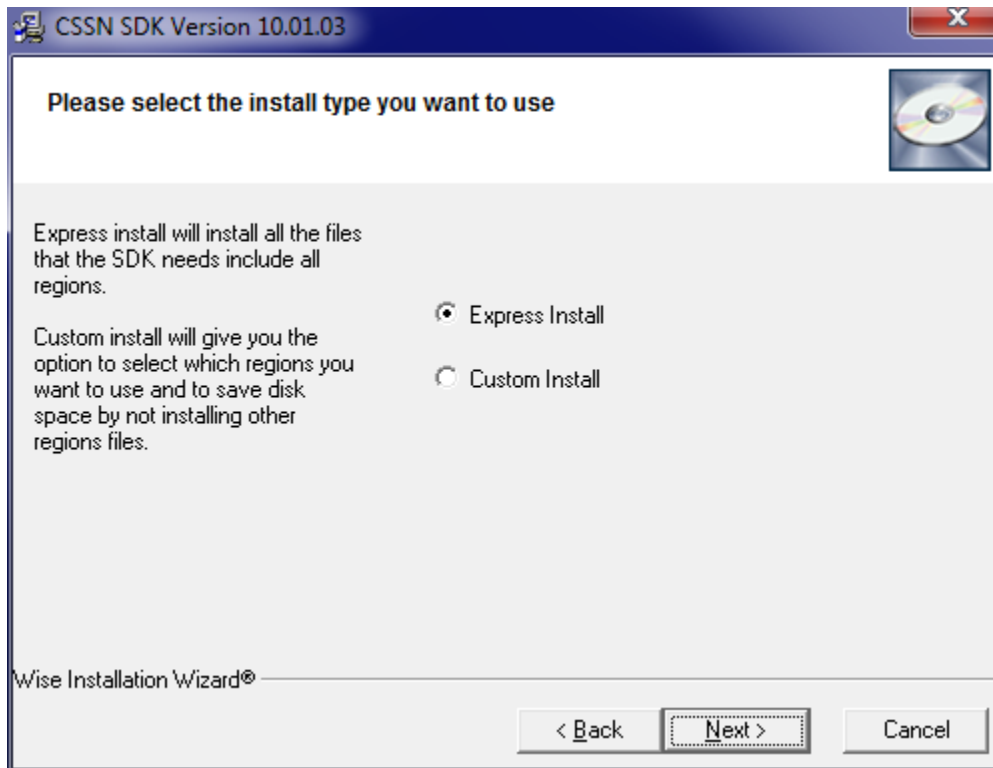
Select the installation directory or leave it default. Default directory recommended. Press – ‘Next’.

Screen 4:



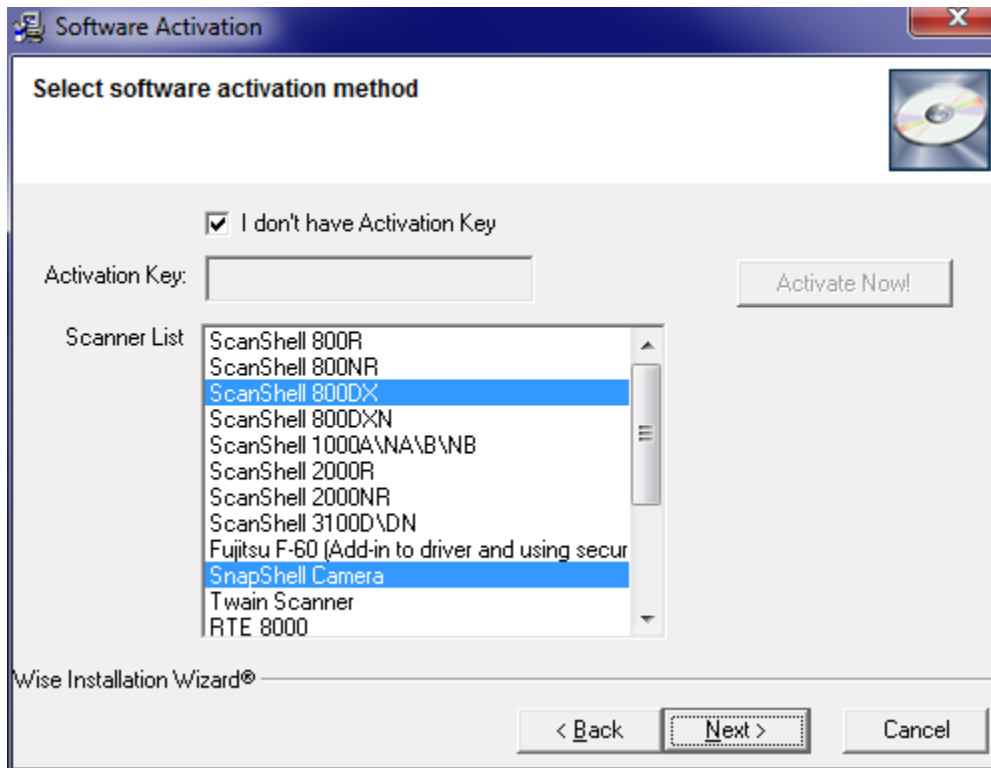
Select the features you would like to Install and Press – 'Next'

Screen 5:



Select the Installation type. Express recommended. Press – ‘Next’

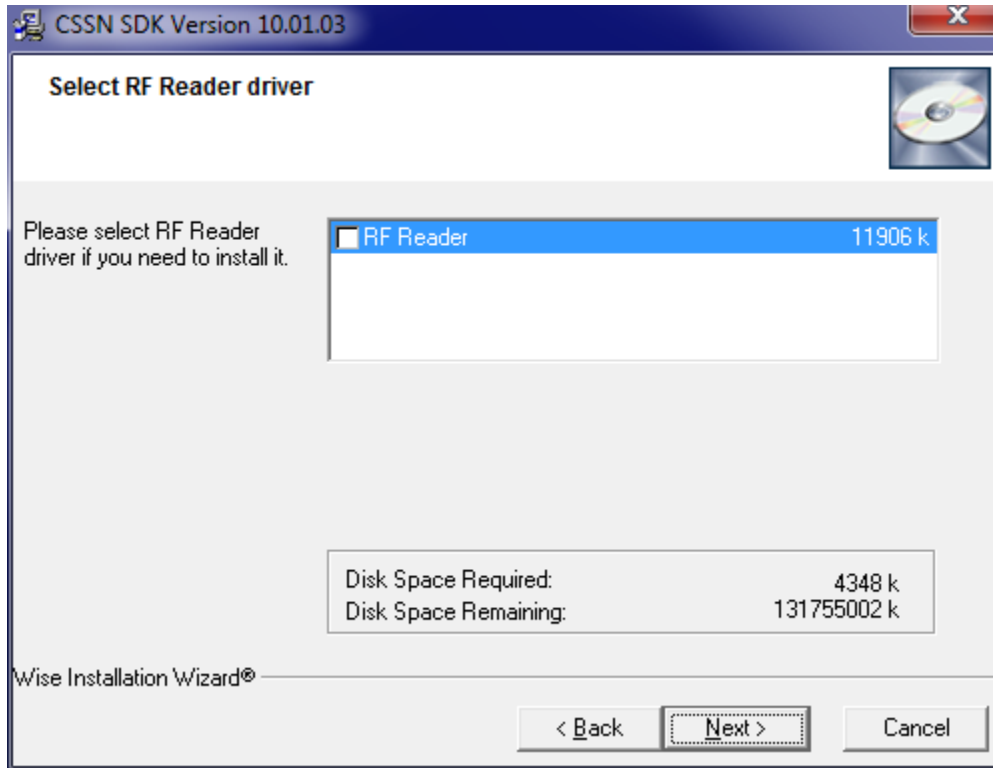
Screen 6:



Select the drivers for the hardware device you want to install. If you are using a device which is not listed in the Scanner List and it's a TWAIN device then please select TWAIN Scanner option.

Press – 'Next'

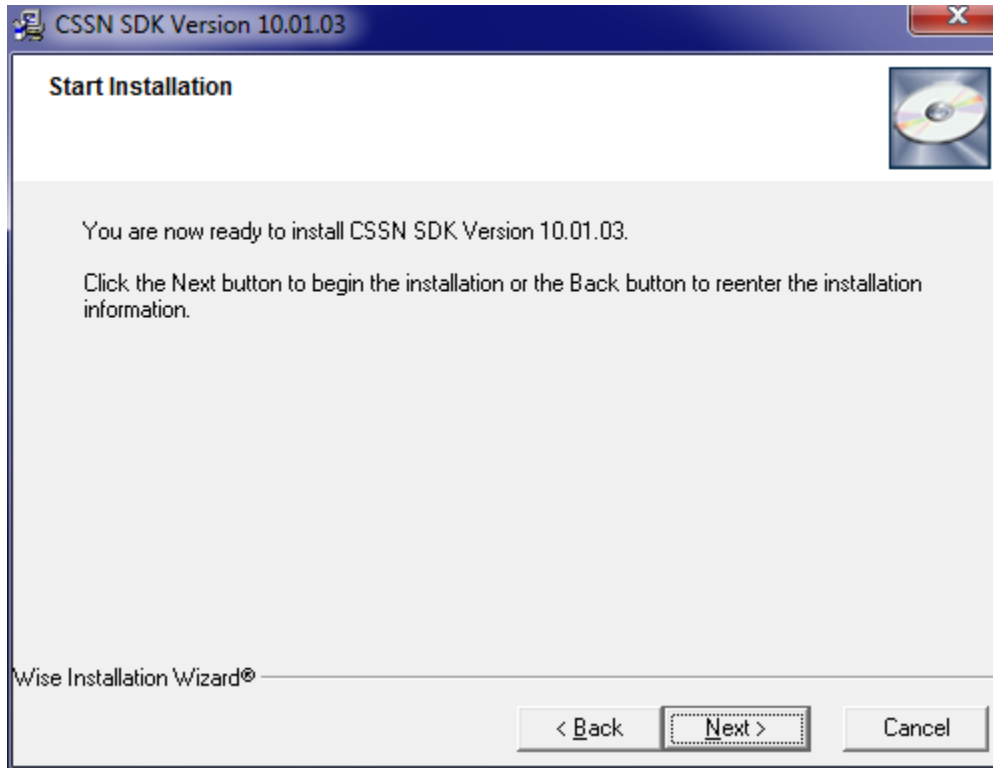
Screen 7:



If you are using Passport SnapShell RFID, please check the above option.

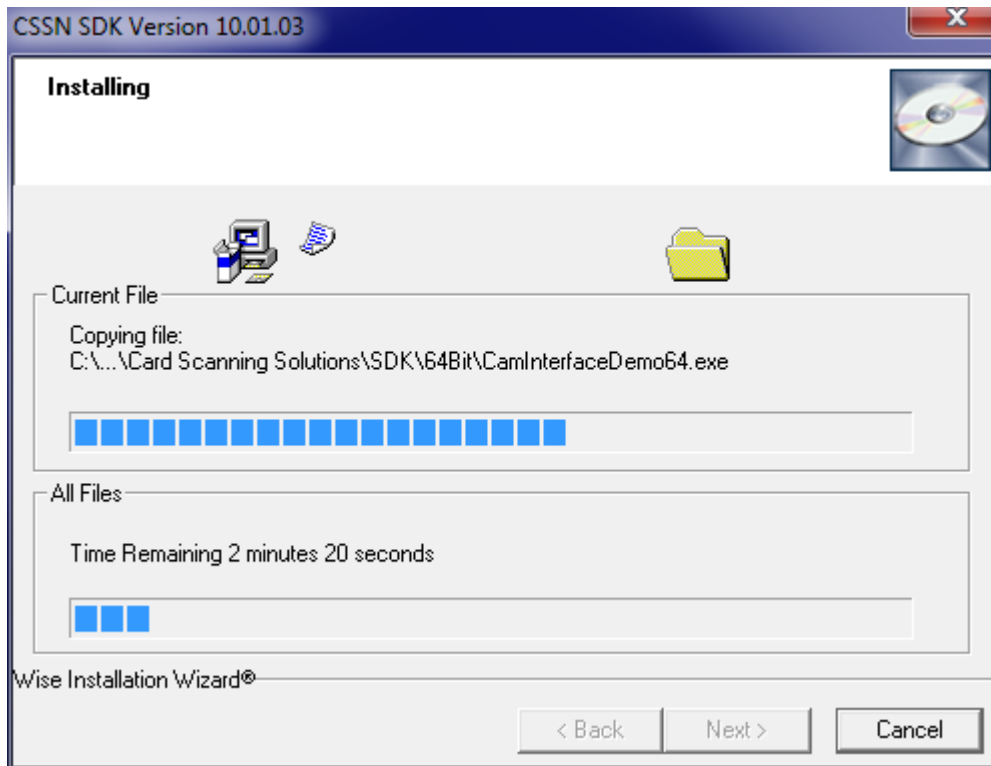
Press – 'Next'

Screen 8:



Press – 'Next'

Screen 9:

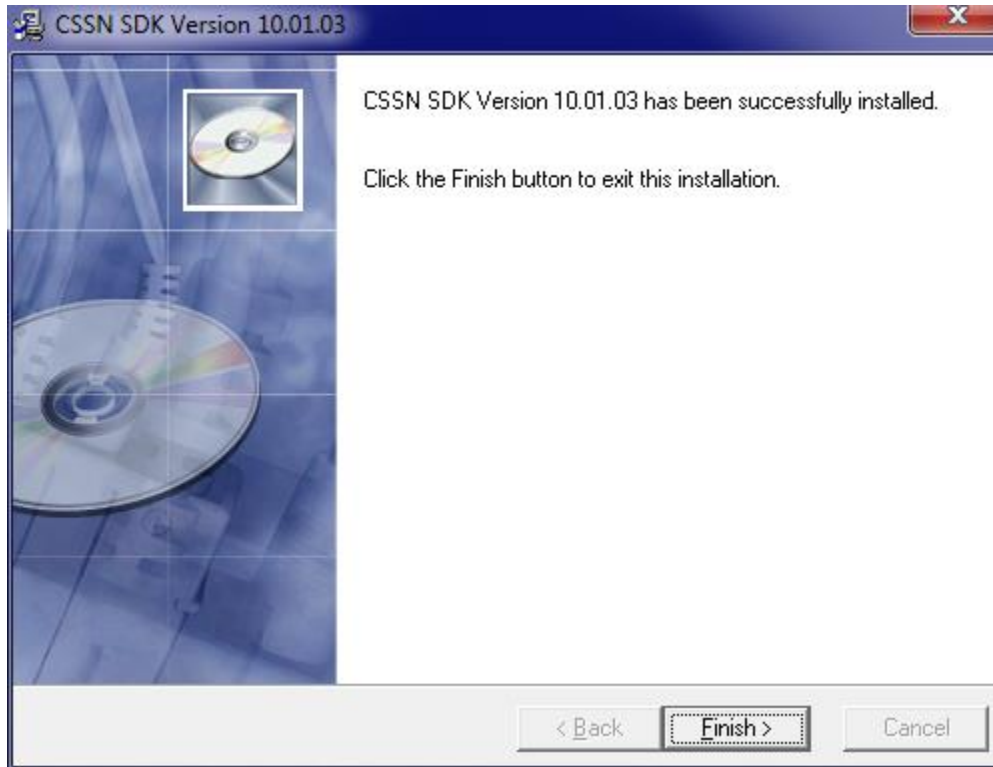


The SDK is currently being installed on your computer. If you press 'Cancel' here, it will stop the installation.



During the installation processes if you see a screen similar to this just press 'Continue Anyway'. This will not harm your operating system.

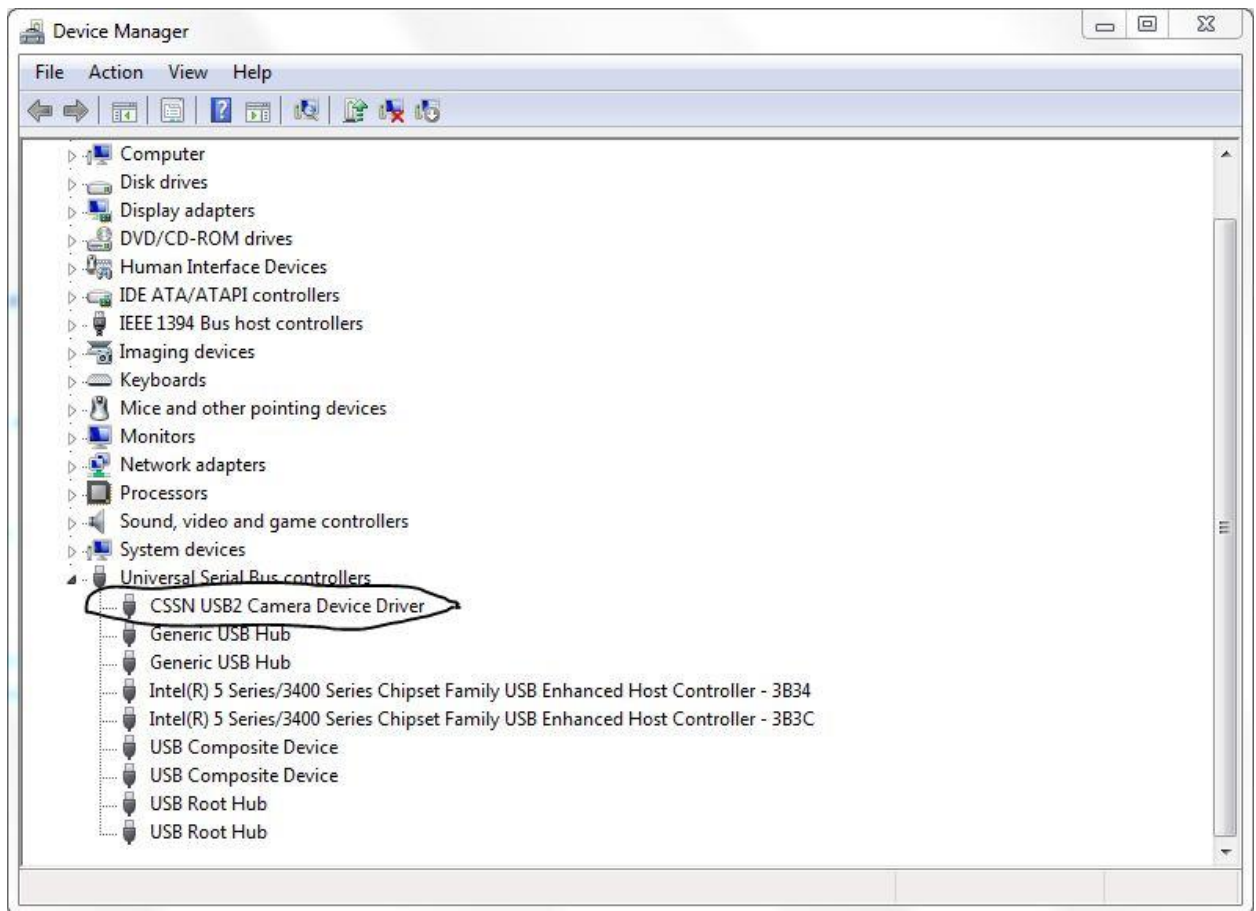
Screen 10:

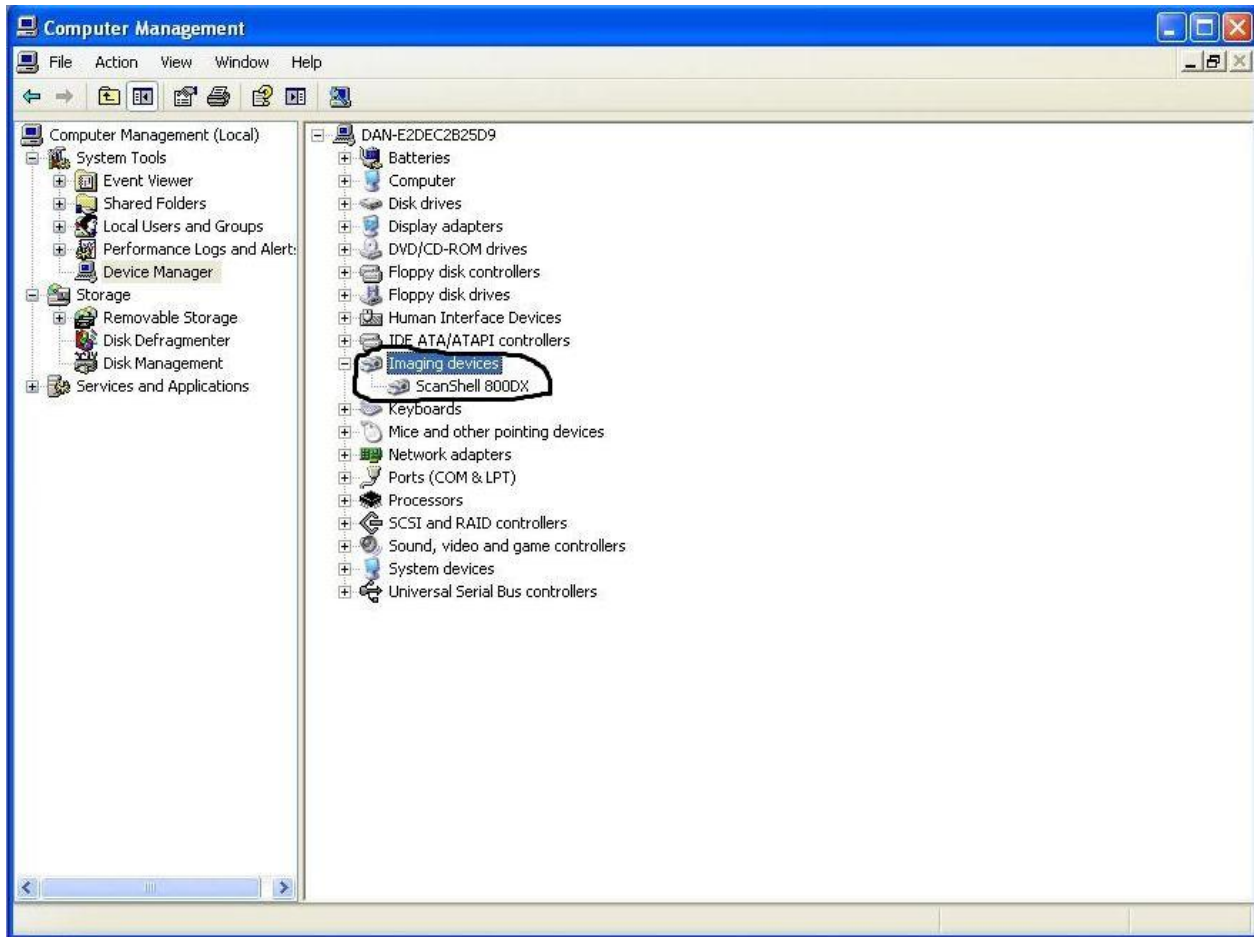


Click finish to complete the successful installation of the SDK.

4.
 - a. Connect the Scanner Device to your computer. If it's a device provided by CSSN Inc. and you have installed correct drivers for it during the installation (Screen 6), you will see the device listed in 'Device Manager' under 'USB' or 'Imaging Device' once the device connected.
 - b. Please make sure device is connected on the back side of the machine. Sometimes when the scanner is connected with a USB hub or on the front side of the machine, it doesn't get enough power for scanning.

Example Screens -

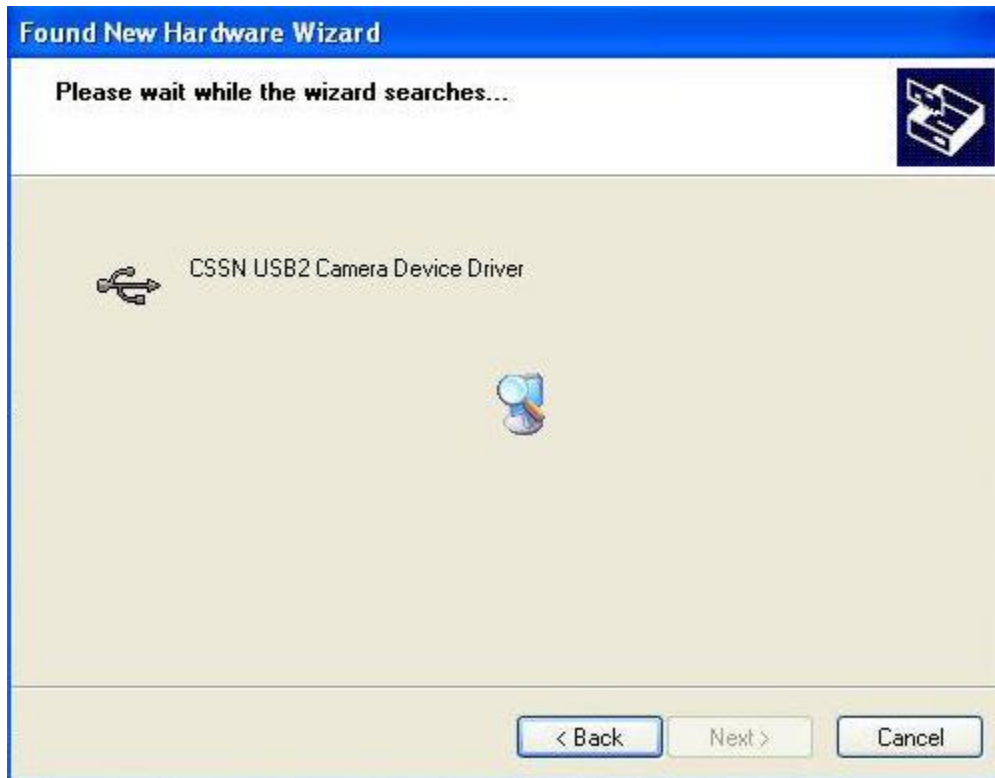




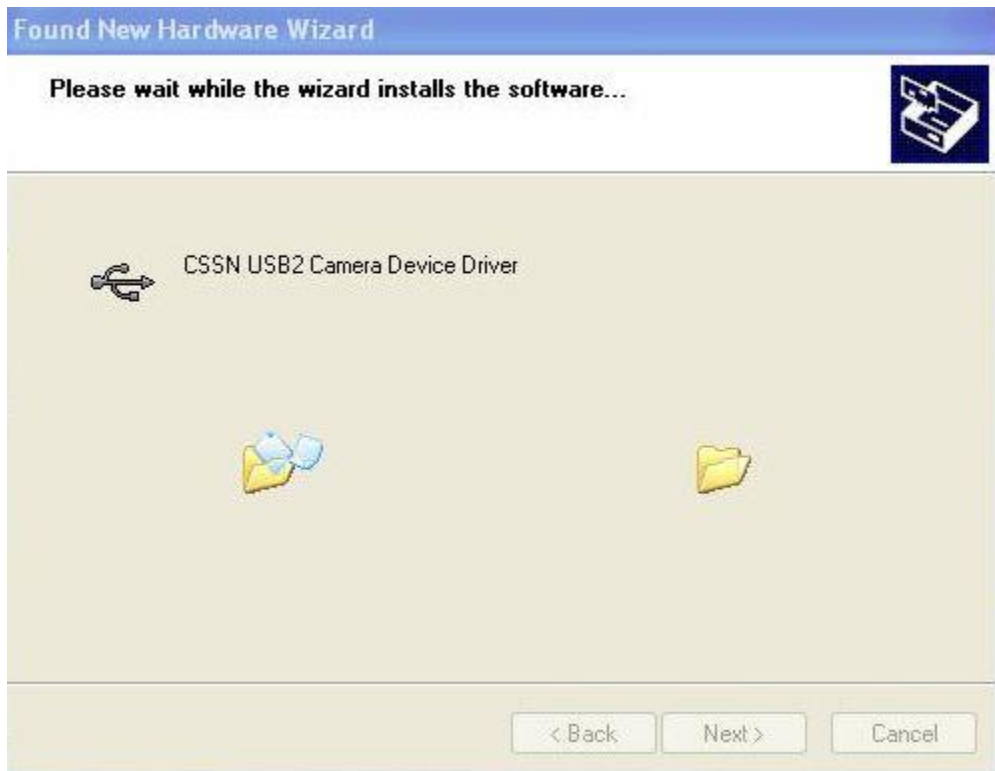
c. After connecting the scanner to Windows XP, you might see a screen similar to this –



Please 'Install the software automatically'. It will automatically pick the drivers from the windows. Press – 'Next'



Windows is now finding the drivers for the scanner.



Windows is now installing the drivers.



Now drivers are successfully installed. Please follow the screen images in step 4a to confirm device is connected successfully.

Light on the CSSN Snap Shell Purple button –

- Constant Red Light - Drivers are not correctly installed or missing drivers.
- White Light - Snap Shell is successfully connected to the computer. The white light will show up for nearly 2 seconds and go off.
- Green Light – Ready to scan.
- Blue – Scanning the card.
- No Light – Hardware installed, application not running.

Light on CSSN ScanShell devices –

- Red Light - Drivers are not correctly installed or missing drivers.
- Green Light - Device is successfully connected to the computer.